

Redmine DB Plugin

Buyer's Guide for decision makers on how to manage your IT assets in Redmine



Redmine DB Plugin

An often underestimated part of managing projects is managing project related assets and information. The problem with data today is not that the information is not available. We face the problem of getting the data correct, keeping it clean, and ensuring its integrity.

Too often project related IT assets are tracked via external spreadsheets by too many different people. Which results in inefficiency and chaos.

Although this approach is common in many companies, it has not been fashionable for a long time. Instead, it is error-prone, incomplete, often not up to date, unclear and difficult to assign.

A better solution is to keep IT assets visible throughout their lifecycle. Use them when and where you need it most. Directly in Redmine, instead of getting lost in spreadsheets.

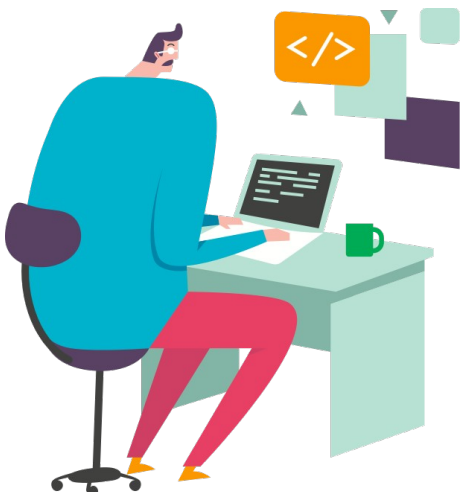


Table of content

01 // Basics

Why Redmine DB?

Redmine DB makes team work easier

Benefits of managing IT assets in Redmine

How the plugin works

02 // Best Practices

03 // Use cases

Top 5 industries

Examples



01

Basics

Improving your team efficiency is easier when you're equipped with the right tools.

The **Redmine DB Plugin** is such a tool. It helps you to get rid of excel sheets for project related assets. Instead you can track all information, that is not an issue but also relevant for your company and your projects within your Redmine tool. To share and manage the information together within your team. Central and real-time.

It's useful for every company that has to struggle regularly with outdated, incomplete and faulty information, which is relevant for their project team or stakeholders.



01

Basics

Why Redmine DB?

Every organization is different. One might want to keep track of intangible assets like licences and compliance documents. Others might want to map their services and products within one central place. And then there are those who need to share certain information with customers.

But one thing most of them have in common is: They use Redmine as a project management tool. And this is where the DB plugin comes into play. Because with the DB Plugin you move the management of assets centrally into Redmine.

- This allows issues to be directly linked to relevant DB entries (your asset information).
- User-defined fields help to extend the information as needed.
- The information is always visible to anyone who has access to it.

IT asset management with Redmine DB makes team work easier

Getting started in Redmine can be a breeze, but as teams grow and work becomes more complex things might get complicated and sometimes out of control.

Especially with a predominantly remote workforce and information distributed on different platforms that not everyone has direct access to.

That's why we put together this little guide on how to get started with *Redmine DB*.

To help you to get back control, visibility and team responsibility for your relevant assets, to avoid unnecessary costs and inconsistency of relevant data.

Did you know?

“Those who use spreadsheets like Excel and Co. quickly reach their limits when it comes to real-time collaboration across the enterprise. Even centrally stored files are difficult to share with your teams.”

*Alexander Meindl,
AlphaNodes GmbH*



01

Basics

Benefits of managing IT assets in Redmine

IT teams use Redmine to resolve tasks more efficiently and to react to incidents fast.

Working with different teams can make it difficult to easily communicate with one another if external information is necessary, as well.

But if you link DB entries directly in your issues, everyone in the team is on the clear track.

- It's a breeze to work together and make information available in real time.
- Necessary asset information can be integrated using just a view clicks.
- Managing and sharing assets within the team provides much more transparency.
- Data consistency can be more easily verified and maintained. (→ Which, by the way, is a good prerequisite for possible, later planned use of automation)

01

Basics

How Redmine DB plugin works

- 1) You create DB types that serve as the main grouping for the DB entries.
- 2) Then you create the necessary custom fields for your information. Assign them to the DB types.
- 3) In the respective project you activate the DB plugin and the necessary DB types.
- 4) Start managing your entries. Either by CSV import or manual input.

The screenshot displays the 'DB entries' interface in Redmine. At the top, there is a search bar and a filter section with 'Status' set to 'is valid'. Below this is a table of entries with columns for '#', 'Project', 'Name', 'Updated', and 'Author'. The table contains 16 entries, including various projects like 'Customer A', 'Test cases', 'Product: DB', and 'HR Department'. A sidebar on the right shows a list of filters and options, including 'Project', 'Description', 'Name', 'Status', 'Private', 'Type', '#', 'Tags', 'Author', 'Assignee', 'Watcher', 'Type', 'Serial number', 'Status', 'Color', 'Size', 'Test environment', and 'Password relation'. At the bottom of the sidebar, the 'Project' filter is selected. The interface also includes 'Apply', 'Clear', and 'Save' buttons, and a footer indicating '(1-16/16)' and 'Also available in Atom | CSV | XLSX'.

DB entries are listed in the respective area of your Redmine. They are available project related or cross-project. Various filters and options make a quick and comfortable search possible. Export into other file formats is available.

Nobody needs to start from scratch. Import existing data via CSV.

01

Basics

Some examples to learn the difference of the most common plugin wording.

DB types

Depending on the application, the DB types that can be managed here can be of different types.

They serve as a generic term (similar to a category) for the content managed in them.

Examples for DB types are: *Hardware, Software, Licences, Contracts, Products etc.*

Besides tagging, the content can be classified, filtered and found faster by typification. Moreover, it is possible to assign fields only to certain DB types, which will be activated per project, only if needed.

DB entries

This is a record of information that is managed with the plugin. It is filterable, searchable, linkable, divisible, editable, etc.

Custom fields

The basic fields can be extended individually with additional fields for storing information. This allows the plugin to be used flexibly for different company goals and departments.

The basic configuration is usually done by administrators. The user is responsible for managing the content. The application will be easy for the users, because a DB entry is created and managed like an issue entry.

02

Best practices

1

Involve your team right from the beginning

Get everyone of the team on board. Brainstorm what DB types would be useful in your company, your department, your team.

Answer these questions first:

What information is necessary to be managed within our project tool? Whom does it help? What custom fields are needed? Who has access to it?

2

Create DB types, first

Before you create a DB type, you should consider under which rough classification the content you want to manage with the plugin falls. This is how the DB types should be named.

3

Create custom fields

It is necessary to define the appropriate fields in which the information will be stored. Make them filterable and searchable for better usability.

4

Create your DB entries

The last step for your start is to create single DB entries. Manually or via CSV import. A robust API (XML, JSON) is also available for DB entry management.

03

Use cases

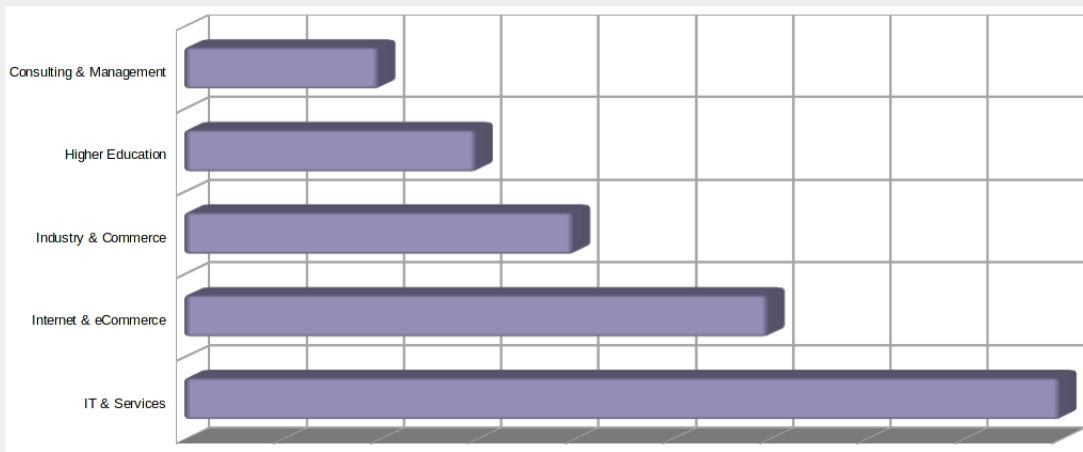
Top 5 industries

The easiest way to efficiently manage, analyze and share project-related IT assets is where your project team already is - in Redmine.

From Office Management department to Product Development to Support and Marketing teams, everyone gets a quick way to securely manage and access their business and project-relevant information in real-time.

Our top 5 industries using the Redmine DB plugin are:

- IT & Services
- Internet & eCommerce
- Industry & Commerce
- Higher Education Institutes
- Consulting & Management



Through the use of custom fields, the Redmine DB plugin is suitable for almost any company that uses Redmine as a project management tool. The chart shows in which industries the plugin is most commonly used.

03

Use cases

Examples

Learn what information our customers integrate using a plugin like Redmine DB to simplify their team work.



- Management of contract information of any kind
- Processing procedure for the DSGVO handling directory
- Article, Product and Service management
- Management of participation in operational training
- Management of object information (real estate, vehicles, equipment, keys, hardware, software, licences, SSL keys etc.)
- Management of web project information
- Management of manufacturer information and conditions
- Assembly / product / color management
- Storing test management information
- Patent information management
- And much more...

Conclusion

Redmine DB Plugin

Stop getting lost in outdated excel sheets. Use a scalable solution for managing all project related assets and information directly in your project management tool Redmine.

Change the way you work.

Get started with Redmine DB, now.

What makes this plugin different from other tools?

The product line of AlphaNodes GmbH consists of high-quality developed, innovative tools for sustainable optimization of projects and facilitation in everyday project work.

The multilingual plugins are regularly maintained, build on the current Redmine version and are affordable for companies as well as educational institutions of all sizes due to the fair licensing policy.

Support & Training:

- 12 month
- E-Mail support (DE / EN)
- Documentation (DE / EN)
- Online-Training and Ressources

